

Activities January to August



Over the page

Buy some bucketsful of water!

Praise for Friends of the Porter Valley

Rising costs mean higher subscriptions

Card sales

Contact details

Committee members

In the newsletter

Geological Challenge 1

Toads, toads and yet more toads 1

Endcliffe Park news 2

Shepherd Wheel restoration 2

Footsoldier 2

Millwrights and Millwrighting

A talk by Chris Ball

Wednesday 6th February

7:30 - 9:30pm

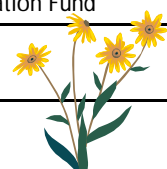
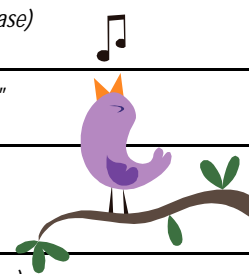
Bents Green Methodist Church
Ringinglow Road



Before the talk we will have our Open Meeting.

After the talk, tea and biscuits, and a chance to chat with the committee and other members.

When and Where	What and Who
Saturday 2 nd February, 10.30am Wire Mill Dam	"Exploring the Roughs" A walk led by Maggie Marsh
Wednesday 6 th February, 7.30pm Bents Green Methodist Church	"Millwrights & millwrighting" Chris Ball
Saturday 1 st March, 10.30am Bingham Park, Rustlings Rd. entrance	"River Archaeology: industrial traces along the Porter" A walk led by Dr. Paul Ardron
Saturday 5 th April, 6.00am Wire Mill Dam	"Dawn chorus walk" (<i>no dogs please</i>) with Professor Tim Birkhead
Saturday 3 rd May, 5.30am Wire Mill Dam	"Dawn chorus walk" (<i>no dogs please</i>) with Professor Tim Birkhead
Wednesday 7 th May, 7.30pm Bents Green Methodist Church	"Oliver Gilbert Memorial lecture" Paul Ardron
Saturday 10 th May, 10.30am Junction of Quarry Lane and Brincliffe Edge Road	"Environment week walk" led by Peter Kennet
Friday 16 th May, 7.00pm Wire Mill Dam	"Evening bird song" (<i>no dogs please</i>) A walk led by Paul Medforth
Saturday 7 th June, 10.30am Forge Dam Café	"The woodland strategy of Sheffield City Council" A walk led by Nick Selwood
14 th June Further details in May newsletter	"Open garden" courtesy of Mrs. Lesley Stanley Proceeds to the Shepherd Wheel Restoration Fund
28 th June Further details in May newsletter	"Open garden" courtesy of Mr. and Mrs. Marston Proceeds to the Shepherd Wheel Restoration Fund
Saturday 5 th July	Walk to be arranged
Saturday 2 nd August, 10.30am Forge Dam Café	"Grasses and meadow flowers" A walk led by Ken Balkow



Buy Some Bucketsful of Water!

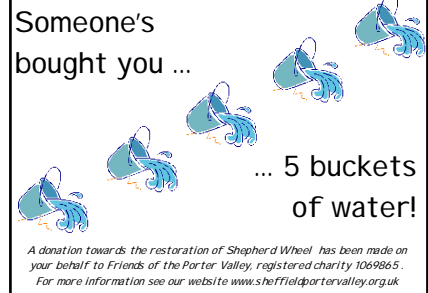
As you probably know, FoPV is trying to raise £20,000 towards the restoration of Shepherd Wheel.

- To run the wheel and machinery in demonstrations each week will require about 180,000 litres of water
- 180,000 litres would fill about 20,000 buckets
- As we need £20,000 - that's £1 for every bucketful

So, we're selling cards, just like this ...
each representing 5 bucketsful of water, for £5 each.

When you're looking for presents for your friends and relatives, give them something a bit different – 5 bucketsful of water for Shepherd Wheel!

To get your gift cards, just send a cheque, payable to Friends of the Porter Valley, to Ros Hancock, 67 Brooklands Ave, Sheffield, S10 4GB with a SAE.



Praise for Friends of the Porter Valley

One of the most rewarding things has been the "thank you" that have come our way in 2007. At the October Cabinet meeting the leader Jan Wilson expressed the Council's appreciation of the work that the Friends of the Porter Valley were doing for park users. Some of us will be meeting Jan Wilson and the Chief Executive Sir Bob Kerslake on 10 January when they visit the South West Area Panel to meet local people. It's been a good year!



Rising costs mean higher subscriptions

At the AGM in November subscription increases were discussed. It was proposed and seconded that the future subscriptions will be: £10 for single membership, £15 for families and £5 for concessions. As the majority of Friends now pay by Bankers Order we have started the lengthy process of contacting everyone to have fresh orders prepared. Reminders for those who pay by cheque or cash are also being sent out.

As you may remember from previous newsletters, this increase had been suggested some time ago, but the urgent need for it was forcefully brought to our attention when the newsletter printers – a local business that produced them at cost – closed down. The printing costs alone went from less than £20 to over £90, and even then we believe we were undercharged.

We have now bought our own printer which has necessitated a slight change in format. We hope that these changes will enable us to continue to keep in touch with the Friends as regularly as we have done for more than eleven years.

Card sales continuing . . .

Many thanks to all who bought Porter Valley Christmas cards to support our general fund-raising. Specifically, for the Shepherd Wheel Restoration Fund, the blank greetings cards, in packs of four for £3, are proving very popular. And now, Peter Elliott, a local artist, has donated his three fine sketches of Shepherd Wheel to produce another card which will be ready soon. Please check our website: all the cards can be seen, plus an order-form. They are also available at Forge Dam and Endcliffe Park cafes, the local Post Offices, or from your Secretary, Flora Owen.

The Committee:

Ann le Sage
Chair
Flora Owen
Secretary / events
David Young
Treasurer
Les Greenwood
Membership Secretary
Stephen Allan
Parks Forum / repairs
Ann Granville
Minutes / newsletter
Ros Hancock
Allotment
Glynis Jones
Newsletter
Malcolm Jones
Parks Forum / planning
Tony Marsh
Website Administrator